



# Flexline®



Flexline is constructed of advanced polymers, designed with rounded corners and infused with Microban antimicrobial product protection for a clean, durable solution that withstands the rigors of a healthcare environment.



Metro incorporates several elements in its product design to support a facility's infection control processes:

- Microban® antimicrobial protection helps keep products "cleaner between cleanings"
- Advanced polymer and other proprietary finishes provide corrosion resistance
- Smooth rounded corners to allow for easier cleaning

Look for the "red check" symbol for this added protection.

To configure a Flexline cart to your exact specifications, please visit [www.metroconfigurator.com](http://www.metroconfigurator.com)



# Standardized options... configured by you.

DRAWER PULL  
COLORS



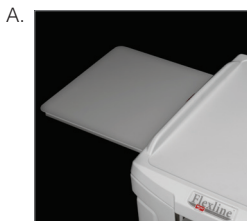
CODE CART  
DRAWER PULL COLOR



PEDIATRIC  
COLOR KIT



- A. Pull out side shelf provides additional work space.
- B. Pull out interior shelf accommodates equipment or used as a seated writing surface.
- C. Laptop arm and keyboard shelf accommodate technology needs.
- D. Full extension drawers have self-closing ball bearing slides to provide easy access to medications and supplies. (Drawer depths: 3", 6", 9", 12")
- E. Auto Lock Keyless Entry Touchpads, Card Readers, Cart Management System Software (Wireless/USB). Key Locks and Passive Locks are available for every security need.
- F. Spacious work surface provides a smooth writing surface or ample space for prep work.
- G. 5" (127mm) polymer caster, 2 directional and 2 total lock casters provide control and stability.
- H. Overbridge storage creates additional space and clears clutter without expanding the cart footprint.
- I. Recessed side storage holds tilt out bins, wastebaskets, lockable sharps containers, O<sub>2</sub> tanks, glove boxes, and suction pump shelves.
- J. Strapless defibrillator platform adjusts to fit various defibrillators and can be moved away from work surface and towards the patient.
- K. The backboard can be mounted to the front or back of the cart.
- L. Passive security seals for the entire cart or individual drawers.



Flexline carts are built to exact customer specifications, therefore, they are non-cancellable, non-returnable.

# FLEXLINE® CARTS

Package includes carts, accessories and colored drawer pulls as shown.



 Indicates Wireless Capabilities




Code Response Package  
Cat. No. **FLCRP4**



Pediatric Code Response  
Cat. No. **FLPED1**



Anesthesia Package  
Cat. No. **FLXANES1**  
 Cat. No. **FLWANES1**



ED Overflow Package  
Cat. No. **FLEDOF**



Isolation Package  
Cat. No. **FLISO1**



ECMO Package  
Cat. No. **FLECMO**



Bedside Package  
Cat. No. **FLBED**



Malignant Hyperthermia Package  
Cat. No. **FLMAGNT**



Treatment Package  
Cat. No. **FLXTMENT2**

Package includes carts, accessories and colored drawer pulls as shown.

Indicates Wireless Capabilities



Procedure Package  
Cat. No. **FLXPROC1**  
Cat. No. **FLWPROC1**



Telemedicine Package  
Cat. No. **FLTEL**



Cast Package  
Cat. No. **FLCAST**



Endoscopic Package  
Cat. No. **FLXENDO**  
Cat. No. **FLWENDO**



Dressing Package  
Cat. No. **FLDRS**



Phlebotomy Package  
Cat. No. **FLXIV**  
Cat. No. **FLWIV**



Critical Care Package  
Cat. No. **FLXCCU1**  
Cat. No. **FLWCCU1**



Airway Package  
Cat. No. **FLXAIR**  
Cat. No. **FLWAIR**



Nurse Server Package  
Cat. No. **FLNURSE**



# Medical Integrated Technology

Many applications in healthcare today are utilizing a form of technology. Applications that are integrating technology into their process need a cart that can accommodate those components. The needs can range from a simple hospital grade strip and articulating laptop arm, to a fully integrated solution with onboard power and a full complement of technology accessories.

## Features Include:

- Articulating arm options to hold laptops, tablets, LCD monitors, and all-in-one computers
- Overbridge computer monitor mounting options
- Retractable keyboard tray
- Available with narcotic drawer option
- Premium power supply supporting all-in-one computers
- Internal/external wire management protects cords from snags and damage
- Automatic electronic locking system



## Carts

Cat. No.	Description	FLXANES-KLIFE Anesthesia	FLXTMENT-KLIFE Treatment	FLEDOF ED Overflow	FLTEL Telemedicine
<b>FL27K-KLIFE</b>	Flexline 42" (1067mm) Cart, Key Lock, Keyboard Tray and LiFe Power Pod		1		
<b>FL30K-KLIFE</b>	Flexline 45" (1067mm) Cart, Key Lock, Keyboard Tray and LiFe Power Pod	1		1	1

## Drawers

Cat. No.	Description	FL-SB	FL-CB	FL-SB	FL-SB
<b>FL102</b>	Keyboard Tray	1	1		
<b>FL103</b>	3" FL Drawer — No Drawer Pull	1	2	2	2
<b>FL106</b>	6" FL Drawer — No Drawer Pull	2	3	2	2
<b>FL109</b>	9" FL Drawer — No Drawer Pull	1		1	1
<b>FL103EL</b>	3" Narcotics Box, Individual Locking Drawer — No Drawer Pull	1			
<b>FL-</b>	Drawer Pull Color	<b>FL-SB</b>	<b>FL-CB</b>	<b>FL-SB</b>	<b>FL-SB</b>

## Computer Accessories

Cat. No.	Description				
<b>COMP-AIOTGM24</b>	All-in-One Computer, Medical Grade 24" Touchscreen	1	1	1	1
<b>COMP-KB15</b>	15.2" L Keyboard, White, USB	1	1		
<b>COMP-MSE</b>	Optical Scroll Mouse, USB	1	1		
<b>COMP-KB15CVR</b>	Antimicrobial Cover for KB15	1	1		
<b>COMP-MSEAW</b>	Mouse, Antimicrobial, Waterproof, Silverstorm Medical Scroll Mouse			1	1
<b>COMP-KB18AW</b>	Keyboard, USB, 18.1"L, antimicrobial, Waterproof, White			1	1

## Accessories

Cat. No.	Description				
<b>FL113</b>	3" Drawer Divider Kit	1		1	1
<b>FL114</b>	Short Divider for FL103 5pk Consists of: Qty (1): 5Pk of 3" Short Dividers				1
<b>FL116</b>	6"/9" Drawer Divider Kit	2		1	2
<b>FL211</b>	Side Bin (1) — Locking		3	1	1
<b>FL212</b>	Side Bin (1) — Non Locking	4	1	1	1
<b>FL221</b>	Waste Basket 28 Quart and Holder			1	1
<b>FL236</b>	Single Glove Box Holder			1	
<b>FL250</b>	Sharps Container Mounting Bracket - Non Locking			1	
<b>FL251</b>	Lockable Sharps Container	1	1		
<b>FL302</b>	Cord Manager			1	1
<b>FL312</b>	Peel Pouch Container			1	
<b>FL313</b>	Peel Pouch/Catheter Holder	1			
<b>FL314</b>	Pull Out Side Shelf		1	1	
<b>FL318A</b>	Articulating Monitor Arm (wt. range 7.5-25 lbs.)			1	
<b>FLX412</b>	Basic Touchpad (250 users, Auto Lock)			1	
<b>FLX420</b>	Advanced LCD Touchpad (6,000 users, Auto Lock)	1	1		
<b>FL505</b>	Flexline Overbridge Computer/Monitor Mounting Kit	1	1		1
<b>FL546</b>	Tilt Bin 6 for Overbridge	1			1
<b>LEC9800</b>	Sharps Container Bracket			1	

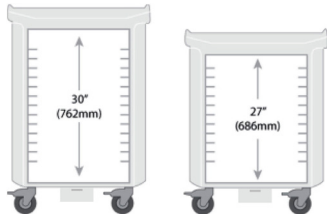


## Build-a-Cart – {35.40}

### Cart Bodies without Drawers

PowerPod Equipped Carts feature a LiFe battery, universal input voltage, and 120 VAC, 60 Hz output, 150 W maximum

(In.)	(mm)	(In.)	(mm)	Keyboard Mount	Width	Key Lock Cat. No.	Passive Lock Cat. No.
22.38 x 32.25 x 38.5	568 x 819 x 978	24	610	Keyboard Tray	Standard	<b>FL24K-KLIFE</b>	<b>FL24P-KLIFE</b>
22.38 x 32.25 x 41.88	568 x 819 x 1064	27	686	Keyboard Tray	Standard	<b>FL27K-KLIFE</b>	<b>FL27P-KLIFE</b>
22.38 x 32.25 x 45.25	568 x 819 x 1149	30	762	Keyboard Tray	Standard	<b>FL30K-KLIFE</b>	<b>FL30P-KLIFE</b>
22.38 x 28.88 x 38.5	568 x 734 x 978	24	610	Keyboard Tray	Narrow	<b>FLN24K-KLIFE</b>	<b>FLN24P-KLIFE</b>
22.38 x 28.88 x 41.88	568 x 734 x 1064	27	686	Keyboard Tray	Narrow	<b>FLN27K-KLIFE</b>	<b>FLN27P-KLIFE</b>
22.38 x 28.88 x 45.25	568 x 734 x 1149	30	762	Keyboard Tray	Narrow	<b>FLN30K-KLIFE</b>	<b>FLN30P-KLIFE</b>



Nominal dimensions shown above



FL505



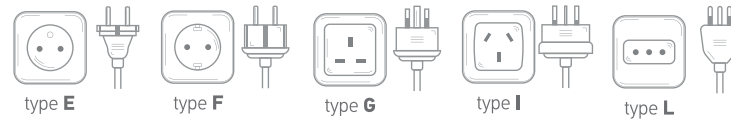
FL310A



FL318-LD

### Power Cords for XP Models

Description	Cat. No.
Flexline 6 ft (2 m) Power Cord - Europe and Russia Type E/F	<b>FLCORD-EFXP</b>
Flexline 6 ft (2 m) Power Cord - Great Britain/UK Type G	<b>FLCORD-GXP</b>
Flexline 6 ft (2 m) Power Cord - Australia/China/New Zealand Type I	<b>FLCORD-IXP</b>
Flexline 6 ft (2 m) Power Cord - Italy/Chile Type L	<b>FLCORD-LXP</b>



### Drawers

Description	Cat. No.
3" (76 mm) Individual Locking Drawer for Narcotics Storage, Key Lock	<b>FL103KL*F</b>
3" (76 mm) Individual Locking Drawer for Narcotics Storage, Electronic Access (Use w/ FLX420 or FLX420W)	<b>FL103EL*F</b>
3" (76 mm) Drawer (No Drawer Pull)	<b>FL103*</b>
6" (152 mm) Drawer (No Drawer Pull)	<b>FL106*</b>
9" (229 mm) Drawer (No Drawer Pull)	<b>FL109*</b>
12" (305 mm) Drawer (No Drawer Pull)	<b>FL112*</b>

\* - Flexline standard drawer pull colors available  
 F - Must be factory installed prior to shipment

### Computer & Computer Accessories

Description	Cat. No.
Tangent Mini Computer - Intel i5, 8 GB RAM, 240 GB SSD, Windows 10 Pro	<b>COMP-MINITGI</b>
Tangent All-In-One Medical Grade Computer M24 - 24" Touchscreen, Intel i5, 8 GB RAM, 240 GB SSD, Windows 10 Pro	<b>COMP-AIOTGM24</b>
Tangent All-In-One Medical Grade Computer T24 - 24" Touchscreen, Swappable Battery Ready, Intel i5, 8 GB RAM, 500 GB HD, Windows 10 Pro	<b>COMP-AIOTGT24</b>
Battery Charger for T24 Swappable Battery, 6 bay	<b>COMP-CHRGTTGT24</b>
Swappable Battery for Tangent T24 All-In-One Computer, Qty. 3	<b>COMP-BATT3TGT24</b>
15.2" Ultra X-Slim Keyboard, White, USB	<b>COMP-KB15</b>
Antimicrobial Keyboard Cover for KB15	<b>COMP-KB15CVR</b>
14.7" Antimicrobial Cleanable Sealed Keyboard, White, USB	<b>COMP-KB15AC</b>
18.1" Waterproof Antimicrobial Keyboard, White, USB	<b>COMP-KB18AW</b>
Optical Scroll Mouse, USB	<b>COMP-MSE</b>
Washable, Medical Antimicrobial Scroll Mouse, White, USB	<b>COMP-MSEAW</b>
22" LED Monitor, 1920 x 1080 resolution, with Privacy Screen	<b>COMP-MON22PS</b>

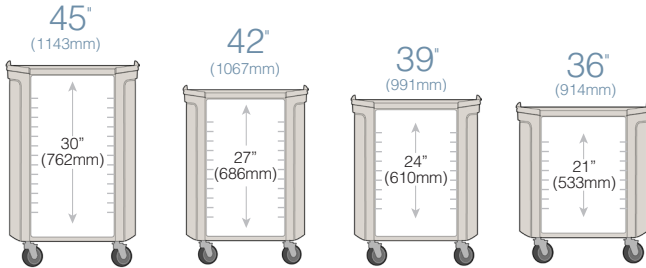
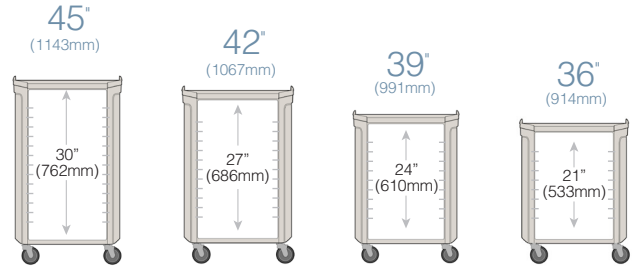
### Computer Mounting Options

Description	Cat. No.
Articulating Monitor/AIO Arm Mounting, Standard Duty, VESA 75/100 Mount, (Weight Range 7.5-25 lbs.)	<b>FL318A</b>
Articulating Monitor/AIO Arm Mounting, Light Duty, VESA 75/100 Mount, (Weight Range 2-13 lbs.)	<b>FL318-LD</b>
Laptop Tray with Articulating Arm, (Weight Range 2-13 lbs.)	<b>FL310A</b>
Secure Laptop Tray with Articulating Arm, (Weight Range 2-13 lbs.)	<b>FL310SEC</b>
Adjustable Mouse Platform for Standard or Secure Laptop Trays, fits left or right side	<b>FL310MSETRAY</b>
Overbridge Computer/Monitor Mounting Kit (Overbridge, Rail, Bracket and Cord Holder), VESA 75/100 Mount	<b>FL505</b>

**Basic Carts with Drawers**

**FLNK22100**

Cart (Nominal)	Drawer Configuration	Lock	Drawer Pull Color	Cat. No.
36" (914mm) H Standard	2 - 3" (76mm)	Key Lock	Violet	<b>FLK21100</b>
	1 - 6" (152mm)			
	1 - 9" (229mm)			
36" (914mm) H Narrow	3 - 3" (76mm)	Key Lock	Pink	<b>FLNK32000</b>
	2 - 6" (152mm)			
39" (991mm) H Standard	3 - 3" (76mm)	Passive Lock	Red	<b>FLP31100</b>
	1 - 6" (152mm) 1 - 9" (229mm)			
42" (1067mm) H Narrow	2 - 3" (76mm)	Key Lock	Slate Blue	<b>FLNK22100</b>
	2 - 6" (152mm) 1 - 9" (229mm)			
42" (1067mm) H Standard	4 - 3" (76mm)	Passive Lock	Slate Blue	<b>FLP41100</b>
	1 - 6" (152mm) 1 - 9" (229mm)			
42" (1067mm) H Narrow	3 - 9" (229mm)	Key Lock	Dark Taupe	<b>FLNK00300</b>
45" (1143mm) H Standard	2 - 3" (76mm)	Passive Lock	Orange	<b>FLP22010</b>
	2 - 6" (152mm) 1 - 12" (305mm)			
45" (1143mm) H Narrow	1 - 3" (76mm)	Passive Lock	Green	<b>FLNP13100</b>
	3 - 6" (152mm) 1 - 9" (229mm)			

**Build-a-Cart**
**STANDARD CART**

**NARROW CART**


Nominal dimensions shown above

**Cart Bodies without Drawers**

Actual Width/Length/Height		Drawer Space		Lock	Width	Cat. No.
(in.)	(mm)	(in.)	(mm)			
22.38 x 32.25 x 35.13	568 x 819 x 892	21	533	Passive Lock	Standard	<b>FL21P</b>
22.38 x 32.25 x 38.5	568 x 819 x 978	24	610	Passive Lock	Standard	<b>FL24P</b>
22.38 x 32.25 x 41.88	568 x 819 x 1064	27	686	Passive Lock	Standard	<b>FL27P</b>
22.38 x 32.25 x 45.25	568 x 819 x 1149	30	762	Passive Lock	Standard	<b>FL30P</b>
22.38 x 28.88 x 35.13	568 x 734 x 892	21	533	Passive Lock	Narrow	<b>FLN21P</b>
22.38 x 28.88 x 38.5	568 x 734 x 978	24	610	Passive Lock	Narrow	<b>FLN24P</b>
22.38 x 28.88 x 41.88	568 x 734 x 1064	27	686	Passive Lock	Narrow	<b>FLN27P</b>
22.38 x 28.88 x 45.25	568 x 734 x 1149	30	762	Passive Lock	Narrow	<b>FLN30P</b>
22.38 x 32.25 x 35.13	568 x 819 x 892	21	533	Key Lock	Standard	<b>FL21K</b>
22.38 x 32.25 x 38.5	568 x 819 x 978	24	610	Key Lock	Standard	<b>FL24K</b>
22.38 x 32.25 x 41.88	568 x 819 x 1064	27	686	Key Lock	Standard	<b>FL27K</b>
22.38 x 32.25 x 45.25	568 x 819 x 1149	30	762	Key Lock	Standard	<b>FL30K</b>
22.38 x 28.88 x 35.13	568 x 734 x 892	21	533	Key Lock	Narrow	<b>FLN21K</b>
22.38 x 28.88 x 38.5	568 x 734 x 978	24	610	Key Lock	Narrow	<b>FLN24K</b>
22.38 x 28.88 x 41.88	568 x 734 x 1064	27	686	Key Lock	Narrow	<b>FLN27K</b>
22.38 x 28.88 x 45.25	568 x 734 x 1149	30	762	Key Lock	Narrow	<b>FLN30K</b>

## Additional Security

Description	Cat. No.
Individual Drawer Seal Lock Bar - 36" (914 mm) Cart	<b>FL400<sup>F</sup></b>
Individual Drawer Seal Lock Bar - 39" (991 mm) Cart	<b>FL401<sup>F</sup></b>
Individual Drawer Seal Lock Bar - 42" (1067 mm) Cart	<b>FL402<sup>F</sup></b>
Individual Drawer Seal Lock Bar - 45" (1143 mm) Cart	<b>FL403<sup>F</sup></b>
Electronic PIN Lock	<b>FLX410<sup>*F</sup></b>
Basic Keyless Entry Touchpad with Auto Lock, USB Port	<b>FLX412<sup>*F</sup></b>
Advanced LCD Keyless Entry Touchpad with Auto Lock, USB Port	<b>FLX420<sup>*F</sup></b>
Advanced Wireless LCD Keyless Entry Touchpad with Auto Lock, USB Port, Wireless Connectivity	<b>FLX420W<sup>*F</sup></b>
Proximity Card Reader 125 kHz for Basic Touchpad	<b>FLX430PLF<sup>**F</sup></b>
Proximity Card Reader 13.56 MHz kHz for Basic Touchpad	<b>FLX430PHF<sup>**F</sup></b>
Proximity Card Reader 125 kHz for Advanced LCD Touchpads	<b>FLX430LCDPLF<sup>**F</sup></b>
Proximity Card Reader 13.56 MHz kHz for Advanced LCD Touchpads	<b>FLX430LCDPHF<sup>**F</sup></b>
Cart Management System Software for Core Wireless System - server and first client license, 1 year tech support	<b>FLX423</b>
Cart Management System Software - USB Local Connection or additional client license for Wireless system	<b>FLX424</b>

\* FLX410, FLX412, FLX420, FLX420W can only be ordered with a key locking cart

\*\* Readers may not be compatible with all proximity cards. Sample card is required. Contact your Metro representative.

<sup>F</sup> - Must be factory installed prior to shipment

## Drawer, Shelf & Keyboard Shelf

Description	Cat. No.
Lockable Drawer Cover	<b>FL100<sup>F</sup></b>
3" (76 mm) Pull Out Shelf	<b>FL101</b>
3" (76 mm) Keyboard Tray	<b>FL102<sup>F</sup></b>
3" (76 mm) Individual Locking Drawer for Narcotics Storage, Key Lock	<b>FL103KL<sup>F</sup></b>
3" (76 mm) Individual Locking Drawer for Narcotics Storage, Electronic Access	<b>FL103EL<sup>*F</sup></b>
3" (76 mm) Drawer (No Drawer Pull)	<b>FL103</b>
6" (152 mm) Drawer (No Drawer Pull)	<b>FL106</b>
9" (229 mm) Drawer (No Drawer Pull)	<b>FL109</b>
12" (305 mm) Drawer (No Drawer Pull)	<b>FL112</b>
Solid Bottom Shelf	<b>FL120</b>
Pediatric Code Response Drawer Pull Color Kit	<b>FL-PED9</b>

\* For use only in carts configured with FLX420 or FLX420W

<sup>F</sup> - Must be factory installed prior to shipment

## Flexline Electronic Locking Options

### FLX410 - PIN Lock



- Convenient Keyless Access
- Up to 20 Possible Access Codes
- 5+ Years Battery Life
- Manual Relock

### FLX420 - Advanced LCD Touchpad



- LCD Screen Provides Enhanced Feedback
- Up to 6,000 Users
- Controls up to 3 Optional Electronic Locking Controlled Substance Drawers
- Motion Sensor Prevents Cart Locking While In Use
- Proximity Card Reader Capable
- USB Port for PC Data Exchange
- Auto Relock Standard
- Typical 1 Year Battery Life (6 Alkaline D Cells)

### FLX412 - Basic Touchpad



- Auto Relock Standard
- Up to 250 Users
- Typical 1 Year Battery Life (6 Alkaline D Cells)
- Proximity Card Reader Capable
- USB Port for PC Data Exchange

### FLX420W - Advanced Wireless LCD Touchpad



- Standard Features of FLX420
- Adds Wireless Communication Module for the Ultimate in Convenience & Control
- Requires FLX423 Software Package (1 per network)



**LEARN MORE**



Lock Type & Style Information.  
**Pg. 194-195**

## Flexline Cart Management System Software

### FLX424 - LockView 5 Single License (USB, Local)

Typically installed on a laptop, this software provides local USB communication with the carts. Manages users, access rights to individual carts, cart settings, and can view and generate reports on cart access audit trails.

### FLX423 - LockView 5Pro Package (Wireless)

This software package includes two licenses - one for the central server and one for a manager's computer, and is required for wireless installations. The first year of software technical support is also included. Additional cart manager computers can be added by purchasing FLX424 licenses. Provides all of the benefits of the USB system plus regular data updates and allows for automated reporting. Manage all of your carts without leaving your desk.


**FL151**

**FL159**

**FL190** (Label not included)

## Drawer Accessories

Description	Cat. No.
Divider Clip to Attach Loose Short Divider-end to Long Divider, 1 per Short Divider (Qty. 2)	<b>T-CLIP</b>
3" (76mm) Drawer Divider Kit (3 Long, 5 Short, 6 T-Clips)	<b>FL113</b>
Short Divider for LEC103 or FL103 5 Pack 6.88" L (175mm)	<b>FL114</b>
Long Divider for LEC103 or FL103 2 Pack 17.25" L (437mm)	<b>FL115</b>
6" & 9" (152 / 229mm) Drawer Divider Kit (3 Long, 5 Short, 6 T-Clips)	<b>FL116</b>
Short Divider for LEC106 or FL106 5 Pack 8" L (205mm)	<b>FL117</b>
Long Divider for LEC106 or FL106 2 Pack 17.25" L (437mm)	<b>FL118</b>
Ampule Insert and 12 Divider for Top Cavity or 3" (76mm) Drawer Tray 15.75" x 4.88" (400 x 124mm)	<b>FL131</b>
Divider for FL131, 12 Pack 5" L (125mm)	<b>FL132</b>
3" (76mm) Egg Crate-Style Drawer Divider Kit (Qty. 10 Short/Vertical, 5 Long/Horizontal)	<b>FL141</b>
6" (152mm) Egg Crate-Style Drawer Divider Kit (Qty. 10 Short/Vertical, 5 Long/Horizontal)	<b>FL142</b>
Short Divider for FL141 — Qty. 5 each 10" L (256mm)	<b>FL143</b>
Long Divider for FL141 — Qty. 5 each 17.13" L (436mm)	<b>FL144</b>
Short Divider for FL142 — Qty. 5 each 10" L (256mm)	<b>FL145</b>
Long Divider for FL142 — Qty. 5 each 17.13" L (436mm)	<b>FL146</b>
3" (76mm) Drawer Tray Approx. 20" x 16" (508 x 381mm) with 6 Dividers	<b>FL151</b>
4 Short, 2 Long, Sheet of Blank Labels, 5 Security Bags	
Lid for 3" and 6" (76mm and 152mm) Drawer Tray (Fits FL151 and FL159)	<b>FL158</b>
6" (152mm) Drawer Tray Approx. 19" x 15" (483 x 381mm) with Dividers 6 Short, 2 Long, 5 Security Bags	<b>FL159</b>
Long Divider Rails for LEC143 or FL151 2 Pack 15.5" L (394mm)	<b>FL163</b>
Short Divider for LEC143 or FL151 10 Pack 6.88" L (175mm)	<b>FL164</b>
Long Divider for FL159 (2 Pack) 14.75" L (375mm)	<b>FL166</b>
Short Divider for FL159 (3 Pack) 8" L (205mm)	<b>FL167</b>
Security Bags for 3" (76mm) Tray and 6" (152mm) Tray 20 Pack 21.75"D x 25.13"L (552mm x 638mm)	<b>FL183</b>
Label Holder Set of 10 13.63" L (346mm)	<b>FL190</b>


**FL237**

**FL235**

## Side/Recessed Storage Accessories

Description	Cat. No.
Side Bin (1) — Locking 4.5" x 16.75" x 8.5" (117 x 426 x 216mm)	<b>FL211*F</b>
Side Bin (1) — Non-Locking 4.5" x 16.75" x 8.5" (117 x 426 x 216mm)	<b>FL212</b>
Waste Basket 28 Quart and Holder 14.5" x 10.88" x 15.38" (370 x 275 x 390mm)	<b>FL221</b>
Waste Basket 28 Quart	<b>FL222</b>
Bracket with Velcro for Waste Basket or Large Sharps Container	<b>FL223</b>
O <sub>2</sub> Tank Holder — All Size Carts — 5.5" (140mm) Diameter Tank	<b>FL234-5</b>
O <sub>2</sub> Tank Holder — All Size Carts — 4" (102mm) Diameter Tank	<b>FL234</b>
O <sub>2</sub> Tank Holder — 45" (1140mm)H Cart — 5.5" (140mm) Diameter Tank	<b>FL235-5</b>
9.38" x 5.5" x 19.25" (238 x 144 x 489mm)	
O <sub>2</sub> Tank Holder — 45" (1140mm)H Cart — 4" (102mm) Diameter Tank	<b>FL235</b>
9.38" x 6.75" x 19.25" (238 x 172 x 489mm)	
Glove Box Holder — Single 4" x 10.13" x 6.38" (101 x 258 x 162mm)	<b>FL236</b>
Glove Box Holder — Triple 4" x 10.13" x 18.38" (101 x 258 x 466mm)	<b>FL237</b>
Scope Cabinet, 2 — Hook 10.38" x 9" x 48" (264 x 229 x 1219mm)	<b>FL245**</b>
Scope Cabinet, 4 — Hook 10.38" x 16" x 48" (264 x 406 x 1219mm)	<b>FL246**</b>
Sharps Container Bracket with Velcro® Straps — Non-Locking 9.5" x 3.25" x 9.31" (241 x 83 x 237mm)	<b>FL250</b>
Lockable Sharps Container with Removeable Glove Box Holder 4.75" x 13" x 19.88"	<b>FL251</b>
(with glove box holder) or 11.38" (without glove box holder) (121 x 300 x 505 or 302mm)	
Replacement Containers for FL251 — 20 5 Qt. containers	<b>FL252</b>
Side Mounted Chart Holder 4.25" x 11.5" x 9.25" (120x292x235mm)	<b>FL576</b>


**FL236, FL221**

**FL212**

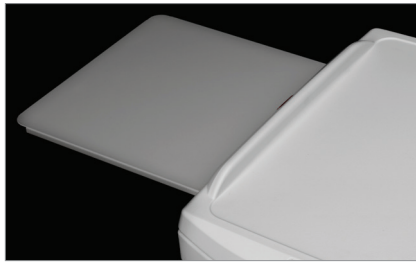
\* Locking bins for keylock cart are available on the right. Locking bins for the passive lock cart are available on the left. Bins are not compatible for "narrow" cart.

F Must be factory installed prior to shipment.

\*\* For use on 45" H (1143mm) carts only.



FL303



FL314



LEC304, FL315



FL310A



FL515, FL544



FL510, FL546, FL544



FL510, FL583, FL581, FL582, FL586

**Cart Accessories**

Description	Cat. No.
Rear Accessory Mount Brackets — 1 Pair	FL301 <sup>F</sup>
Cord Manager .5" x 21.75" x 1.25" (13 x 554 x 31mm)	FL302
Defibrillator Strap Kit	FL303
Adjustable Defibrillator Tray 8.13-14.25" x 14.5" (206-362 x 368mm)	LEC304
Medical Grade 4-Outlet Strip, 120V 15A, UL60601-01, 10' Cord, Cord Wrap	FL305-4US
Universal 6 Outlet Power Strip, 250 V 13A, CE, ROHS, 6' (183cm) Cord, Cord Wrap	See Below
FL305-4US HOSPITAL GRADE	
FL305-EU UNIVERSAL	
FL305-AUS UNIVERSAL	
FL305-UK UNIVERSAL	
FL305-IT UNIVERSAL	
Suction Pump Shelf 12.5" x 15.25" x 4.25 (320 x 384 x 108mm)	LEC306
Backboard with Front and Rear Assembly Kit	LEC307 <sup>F</sup>
Backboard with Blue Front Assembly Kit	LEC308 <sup>F</sup>
Backboard with Red Front Assembly Kit	LEC308RD
Backboard with Blue Back Assembly Kit	LEC309 <sup>F</sup>
Backboard with Red Back Assembly Kit	LEC309RD
Backboard with Rear Assembly Kit for use with an Overbridge	FL309-OB
Backboard with Back Assembly Kit for 36"H (914mm) FL21 Series Cart	FL309-21 <sup>†</sup>
Articulating Arm - Laptop Tray, Weight Range 2-13 lbs. (0.9-6 kg)	FL310A
Articulating Arm - Secure Laptop Tray, Weight Range 2-13 lbs. (0.9-6 kg)	FL310SEC
Adjustable Mouse Platform for Standard or Secure Laptop Tray, fits left or right side	FL310MSETRAY
Articulating Arm - Monitor/AIO Mount, Standard Duty, VESA 75/100 Mount, Weight Range 7.5-25 lbs. (3.4-11.3 kg)	FL318A
Articulating Arm - Monitor/AIO Mount, Light Duty, VESA 75/100 Mount, Weight Range 2-13 lbs. (0.9-6 kg)	FL318-LD
Peel Pouch Container 3" x 6" x 18.25" (78 x 154 x 461mm)	FL312
Peel Pouch/Catheter Holder 3" x 6" x 27.38" (78 x 154 x 695mm)	FL313
Pull Out Side Shelf 12.5" x 30.5" x .38" (322 x 775 x 10mm)	FL314 <sup>F</sup>
2HK I.V. Pole with Cart Mount .5" x 9.13" x 37" (max.)*-25.25" (min.)* (38 x 232 x 940-640mm)	FL315*
4HK I.V. Pole with Cart Mount 5" x 7 1/8" x 37" (max.)*-25.25" (min.)* (127 x 183 x 940-640mm)	FL317*
I.V. Pole-mounted Sharp Brackets	LEC9800
Plastic Security Seals, 100 Pack	LEC320
Backboard 24"L x 24"H x .94" (610 x 610 x 8mm)	LEC323

\*Max., Min. in relation to cart top.

<sup>F</sup>Must be factory installed.

<sup>†</sup>Must be ordered on a 36"H (914mm) cart to accommodate I.V. pole, defibrillator arm, articulating arm or outlet strip.

**Overbridges and Overbridge Accessories**

Description	Cat. No.
Overbridge with Computer/Monitor Mounting Kit	FL505
Overbridge with 2 Hanger Rails 1.25" x 26.13" x 19.88"-25.5" (32 x 665 x 504-649mm)	FL510
Overbridge with Top Shelf and Hanger Rail	FL515
Overbridge with 2 Shelves	FL520
Tilt Bin 3 for Overbridge — 9.5" (241mm)H x 7.75" (197mm)W x 23.63" (600 mm)L	FL543
Tilt Bin 4 for Overbridge — 8.13" (206mm)H x 6.63" (168mm)W x 23.63" (600mm)L	FL544
Tilt Bin 6 for Overbridge — 4.5" (114mm)H x 3.63" (92mm)W x 23.63" (600mm)L	FL546
Hanger Rail	FL550
Overbridge Bottom Shelf 14.5" x 31" (368 x 787mm)	FL559
Overbridge Top Shelf 14.5" x 31" (368 x 787mm)	FL560
2HK I.V. Pole With Universal Clamp — for Overbridge	FL563
4HK I.V. Pole With Universal Clamp — for Overbridge 9.13" x 28.25" x 19.88"-25.5" (232 x 718 x 504-649mm)	FL566
Universal Clamp	FL570
Short Utility Hook 4 Pack (Holds Peel Pouches, I.V. Bags, Stethoscopes, etc.)	FL571*
4-Hook Rack (Holds Forceps and Scopes) 3.88" x 11" x 6" (98 x 282 x 151mm)	FL574
Laryngoscope Blade/Specimen Bag Holder (Holds Plastic Bag — Not Included — for Safe Storage of Contaminated Items) 3.75" x 7.5" x 5.13" (95 x 192 x 130mm)	FL575*
Chart Holder 4.75" x 11.5" x 9.25" (120 x 292 x 235mm)	FL576
Half-Size Utility Bin — 5.5"(140mm)H x 5.5"(140mm)W x 5.75"(146mm)L	FL581
Full-Size Utility Bin — 5.5"(140mm)H x 5.5"(140mm)W x 11.75"(292mm)L	FL582
Label/Tape Dispenser	FL583
Sharps Bracket Container	FL584*
Wire Supply Basket — 5"(127mm)H x 7"(178mm)W x 17"(432mm)L	FL585
Utility Bin with Cover (Pack of Six) 4.13"W x 7.38"L x 3"H (105 x 187 x 76mm)	FL586
Monitor Mounts for Overbridge with Bracket for Overbridge	FL590

\*Fits on universal clamp in addition to a hanger rail.

medi<sup>+</sup>  
HEALTH

Tilaukset: [tilaukset@medihealth.fi](mailto:tilaukset@medihealth.fi) Tiedustelut: [info@medihealth.fi](mailto:info@medihealth.fi)  
Medihealth Oy, Haarasuonkuja 5 90240 Oulu, y-tunnus 3131118-6, [www.medihealth.fi](http://www.medihealth.fi)